

13



aluminium programme



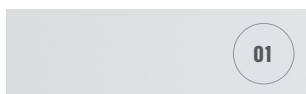
Aluminium frames	13.3 – 13.11
Wall glass panels	13.12
Make Me wall system	13.13 – 13.14
QB it shelf system	13.15
Vertiko wall system	13.17 – 13.18



Aluminium frames

- aluminium frames are custom made according to customer requirements – as standard, we offer frames with hinges, frames for Aventos lifts and slide frames (including fittings)
- aluminium frames are delivered including glass, they are assembled according to requirements, with drilled or milled holes for fittings
- we can of course drill holes for handles according to the customer's requirements
- the holes in the profile itself have a diameter of 4.9 mm and 7 mm in glass; a plastic spacer is included for every hole to prevent glass breaking
- for price calculation and placing an order – always use the current version of the form, which can be found at our website www.demos-trade.com
- glass thickness: 4 mm
- possibility of inserting horizontal and vertical partitions into frames (partitions come from BRW or Vivaro profiles)

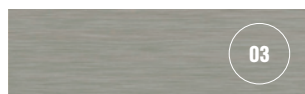
Overview of frame colours



anodised aluminium



white polished RAL9003



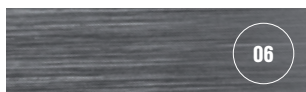
light stainless steel



anthracite



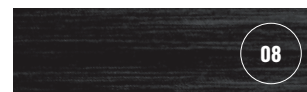
black matt



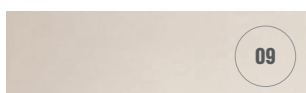
dark stainless steel



brushed aluminium



black brushed



champagne



brown



black polished



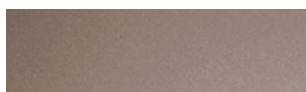
gold

Overview of panels

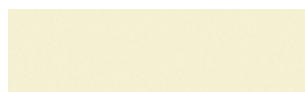
Lacobel palette – polished glass varnished in RAL colour



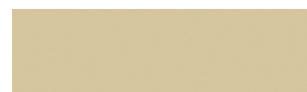
RAL 0337



RAL 0627



RAL 1013



RAL 1015



RAL 1236



RAL 1586



RAL 7035



RAL 9003



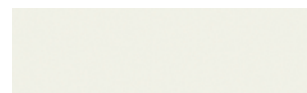
RAL 9005



RAL 9006



RAL 9007



RAL 9010

Samples

313913	samples of glass for aluminium frames
313912	samples of aluminium frames profiles
374152	samples of aluminium frames and glass
402860	Cordia design kit



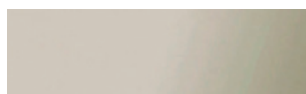
402860


Matelac palette – varnished matt glass


mirror – bronze



mirror – silver



mirror – graphite



pure white (RAL 9003)



black classic (RAL 9005)



white soft (RAL 9010)

Decorative glass


clear glass



lacomat



sand



satinato



satinato graphite



satinato bronze



antisol graphite



stopsol bronze



antisol bronze



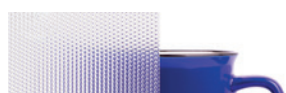
venus VG 10



screen



krizet



master point



master carre



master lens



master shine



master ray



master ligne



mirror



ALUMINIUM PROGRAMME
aluminium frames

Order form



Order easily, quickly
and according to
your ideas



You can find the order form at www.demos-trade.cz/formular-pro-objednani-alu-ramecku-cordia/

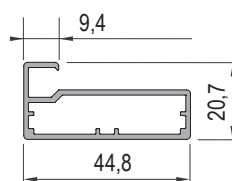
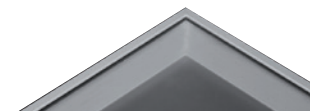




Modena

01	05	06	08
anodised aluminium	black matt	stainless steel dark	black brushed

- weight: 0,5 kg/m
- glass frame panel is 6 mm smaller compared to outer frame dimension
- ☑ for a diagram showing position of connecting component, see p. 13.9

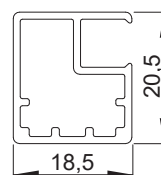


BRW

01	02	03	04	05	06
anodised aluminium	white polished RAL9003	stainless steel light	anthracite	black matt	stainless steel dark

07	08	09	10	12
brushed aluminium	black brushed	champagne	brown	gold

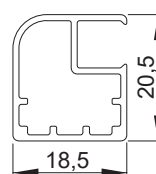
- weight: 0,27 kg/m
- glass frame panel is 24 mm smaller compared to outer frame dimension



Ravena

01
anodised aluminium

- weight: 0,27 kg/m
- glass frame panel is 24 mm smaller compared to outer frame dimension



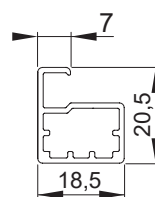
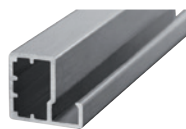


Verona

01	03	05	06	07
anodised aluminium	stainless steel light	black matt	stainless steel dark	brushed aluminium

09	10	11	12
champagne	brown	black polished	gold

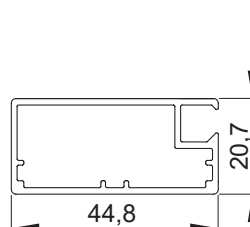
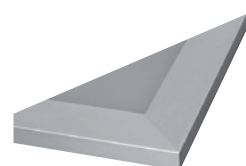
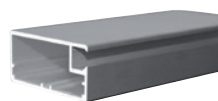
- weight: 0.24 kg/m
- glass frame panel is 5 mm smaller compared to outer frame dimension
-  for a diagram showing position of connecting component, see p. 13.9



Vivaro

01	05	06	12
anodised aluminium	black matt	stainless steel dark	gold

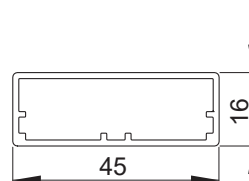
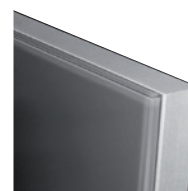
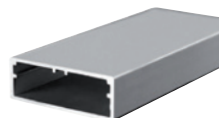
- weight: 0.53 kg/m
- glass frame panel is 76 mm smaller compared to outer frame dimension



Imola

01	05
anodised aluminium	black matt

- weight: 0.42 kg/m
- for a diagram showing position of connecting component, see p. 13.9
-  not suitable for transparent glass (visible glued joint)

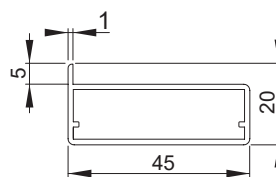
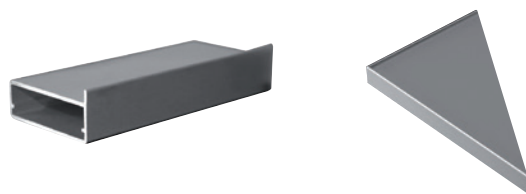




Pisa

01	05
anodised aluminium	black matt

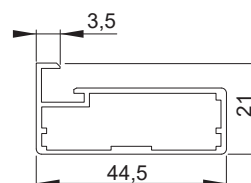
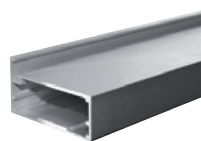
- weight: 0.44 kg/m
- glass frame panel is 3 mm smaller compared to outer frame dimension
- ❗ not suitable for transparent glass (visible glued joint)



Corleone

01	05	09
anodised aluminium	black matt	champagne

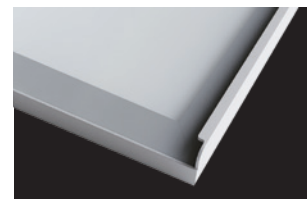
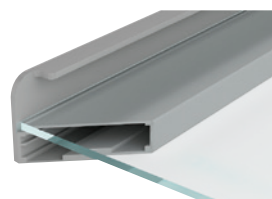
- weight: 0.50 kg/m
- glass frame panel is 4 mm smaller compared to outer frame dimension
- ❗ maximum recommended frame size is 1,500 × 600 mm
- 📐 for a diagram showing position of connecting component, see p. 13.9



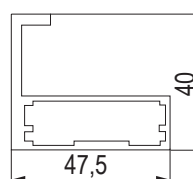
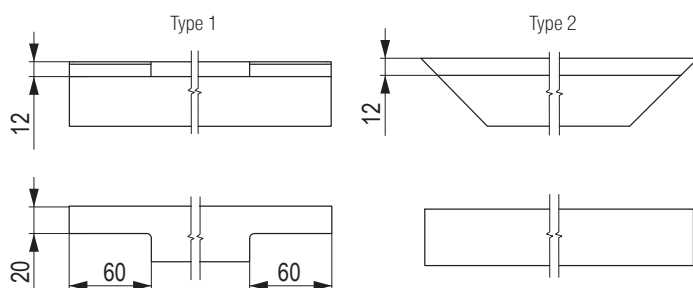
Tropea

01	05
anodised aluminium	black matt

- used with the Corleone profile
- 2 types of handle milling
- maximum width is 730 mm
- ❗ this profile is on request, it is not included in the online order form



Options for the type of milling of the Tropea profile handle





Siena

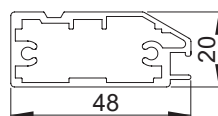
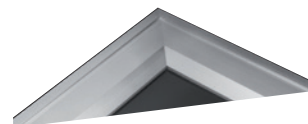
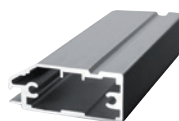
01

05

anodised
aluminium

black
matt

- weight: 0.72 kg/m
- glass frame panel is 87 mm smaller compared to outer frame dimension



Palio

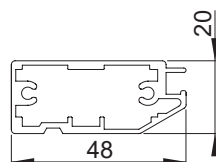
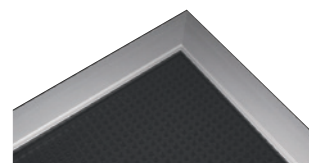
01

05

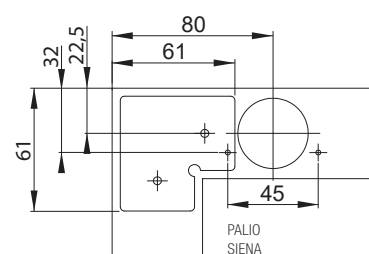
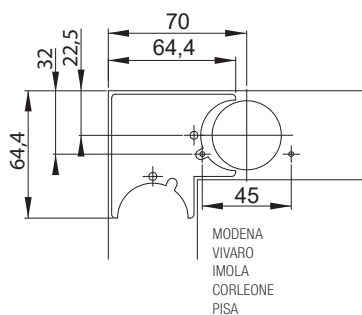
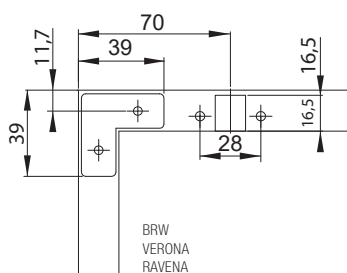
anodised
aluminium

black
matt

- weight: 0.72 kg/m
- glass frame panel is 87 mm smaller compared to outer frame dimension



Diagrams showing position of connecting components

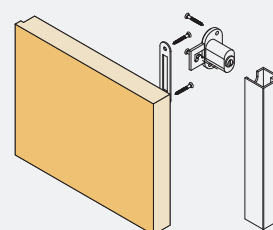
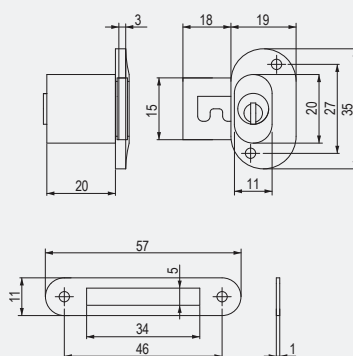
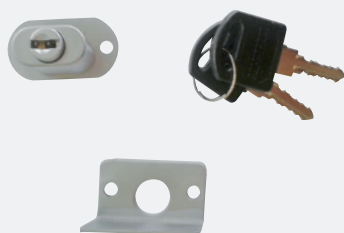




ACCESSORIES

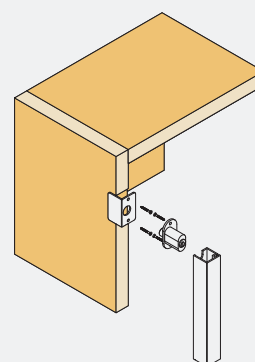
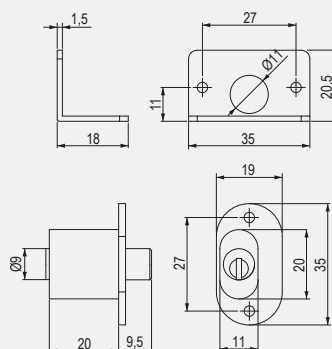
Lock for frame – full overlay door

236413 for 1 leaf



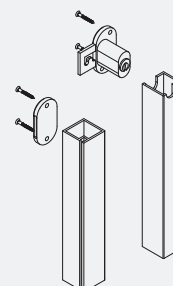
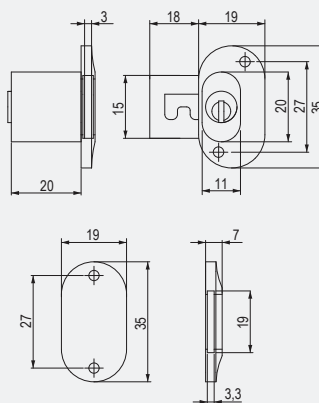
Lock for frame – inset door

236415 for 1 leaf



Lock for frame – full overlay door

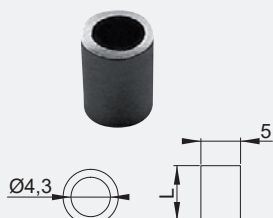
236414 for 2 leaves



❗ The locks cannot be applied to Verona, Modena, Pisa, Imola, Corelone and Ravenna profiles.

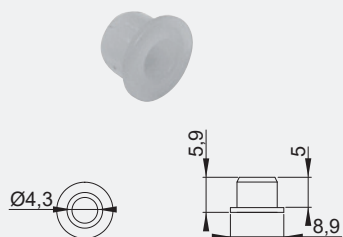


ACCESSORIES



Grommet without rim

144516	metal, height: 5.6 mm
191970	metal, height: 7 mm



Grommet with rim

C0315	plastic
--------------	---------



Screws and bolts for frames

92598T	M4 × 8 mm bolt for narrow frame
13681	screw for wide frame, steel
384350	screw for wide frame, stainless steel



Full overlay hinges for narrow aluminium frames

code	producer	motion
350863	Strong	with soft closing
350864	Strong	unsprung
118033	Blum	with soft closing
12106	Blum	with spring
12109	Blum	unsprung
300279	Hettich	with soft closing
300282	Hettich	without soft closing
300285	Hettich	unsprung

For other variants and types of hinges, see chapter 1



Wall glass panels

- glass cladding in various colours
- simple fixing on the wall directly behind the hob
- mounting with enclosed double-sided adhesive tape
- glass thickness: 5 mm
- tempered glass



Wall glass panels

Black (RAL 9005)

code	width × height (mm)
356145	500 × 600
356146	500 × 800
356147	600 × 700
356148	900 × 700



White (RAL 9003)

code	width × height (mm)
356149	500 × 600
356150	500 × 800
356151	600 × 700
356152	900 × 700



Transparent glass + stainless steel strips

code	width × height (mm)
402566	500 × 600
402567	500 × 800
356153	600 × 700
356154	900 × 700



Brushed aluminium look

code	width × height (mm)
356155	500 × 600
356156	500 × 800
356157	600 × 700
356158	900 × 700





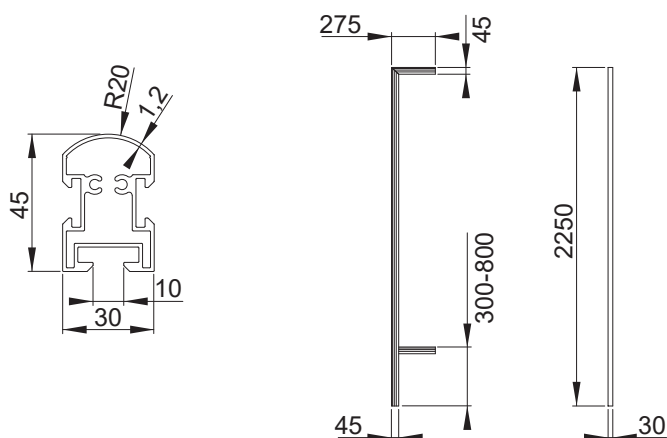
MAKE ME system

- Make Me is a variable aluminium wall system designed for modern interiors and wardrobes
- an attractively designed solution for storage space, simple installation and easy assembly
- individual components are supplied with connecting fittings for attachment to legs



Aluminium leg

code	surface	length (mm)
CP0001	aluminium	2,250
N 402495	black matt	2,250

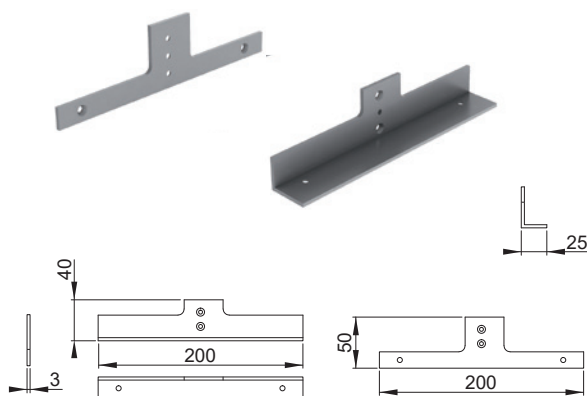




Cabinet holder

code	surface
CP0004	aluminium
402494	black matt

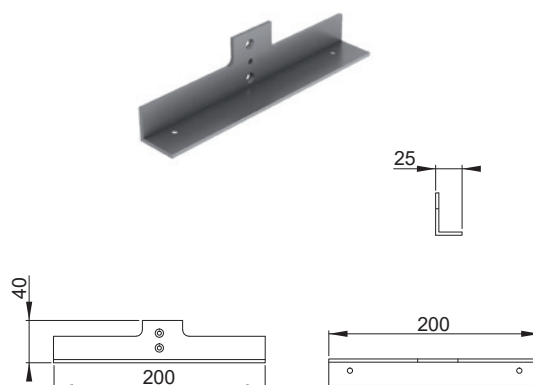
- set includes two pieces of flat upper plates, two pieces of lower L brackets and fittings for attachment to legs
- complete set for one cabinet



Shelf holder – straight

code	surface
CP0005	aluminium
402493	black matt

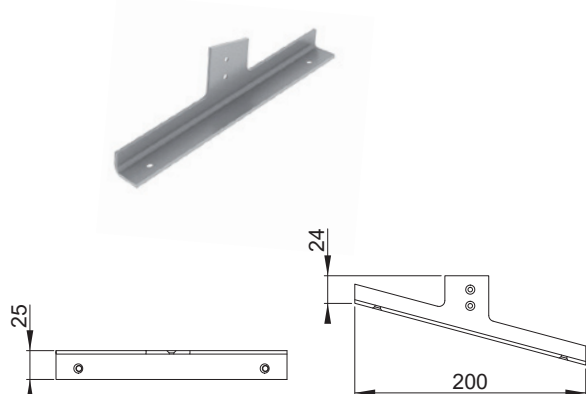
- set contains two shelf brackets
- complete set for attaching one shelf to legs



Shoe rack holder

code	surface
146982	aluminium
402492	black matt

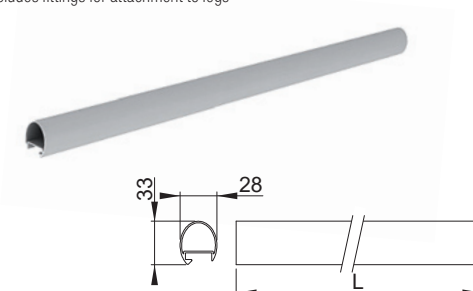
- set contains two shelf brackets
- complete set for attaching one shelf to legs



Wardrobe rail

code	surface	length L (mm)
146988	aluminium	600
402496	black matt	600
134771	aluminium	800
402497	black matt	800
146989	aluminium	900
402498	black matt	900

- set includes fittings for attachment to legs





QB it system

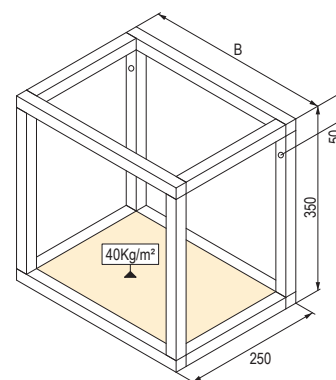
- profile system of shelves
- use instead of cabinets
- profile dimension: 20 × 20 mm
- **black matt** (other colours on request – anodised aluminium, brown, stainless steel imitation or varnishing according to RAL)
- possibility of assembling a free-standing and suspended structure
- choice of fixing holes types – bayonet or round holes



Shelf structure

code	width B (mm)	height (mm)	depth (mm)
357804	400	350	250
357807	600		
357809	800		

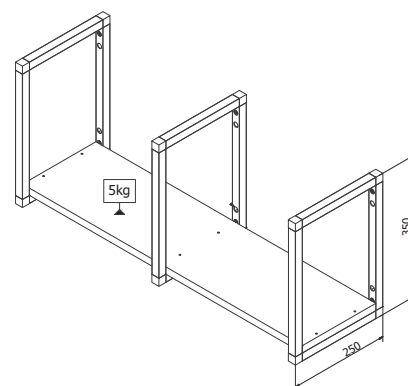
- other dimensions for complete shelf sets can be provided according to individual demand
- material thickness for bottom shelf = 18 mm

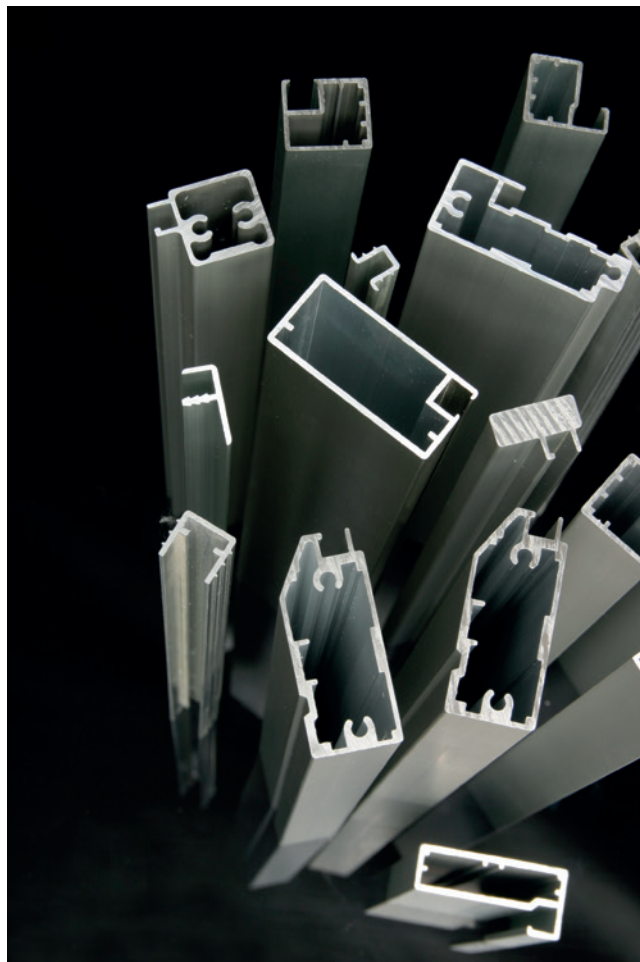


Frame for shelf

code	height (mm)	depth (mm)
357959	350	250

- it is possible to prepare holes for shelves in any height and quantity







Vertiko wall system

Vertiko system

- wall system of vertical profiles and shelf and cabinet holders



Wall profile 2,650 mm

code	material
309016	aluminium

- the profile includes a control plate and a screw



Plastic clip

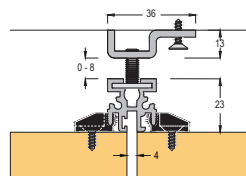
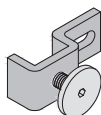
code	material
309018	plastic



Wall bracket

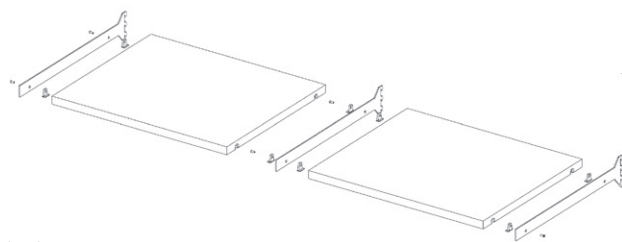
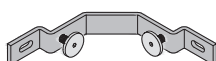
code	material
309017	metal

- it is recommended to use 1 piece per 0.5 m of wall profile



Corner coupling of the profile

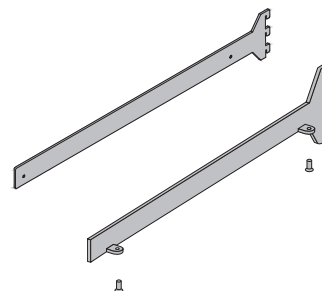
code	material
309019	metal

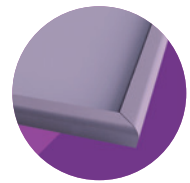


Shelf holder

	code	colour	length (mm)	shelf fixation	shelf thickness (mm)
	359335	grey	300	side	18
N	402852	dark brown	400	side	25-36
N	402853	dark brown	500	side	25-36
N	402854	dark brown	500	lower left	max. 25
N	402855	dark brown	500	lower right	max. 25
N	402856	dark brown	500	lower centre	max. 25

- shelf holders with side fixation must be supplemented with shelf supports



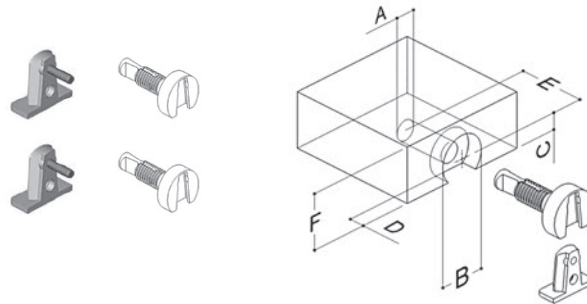


Shelf supports

code	use
408376	side shelf attachment ¹⁾
408377	continuous shelf attachment ²⁾

¹⁾ for one shelf use two sets of side shelf supports

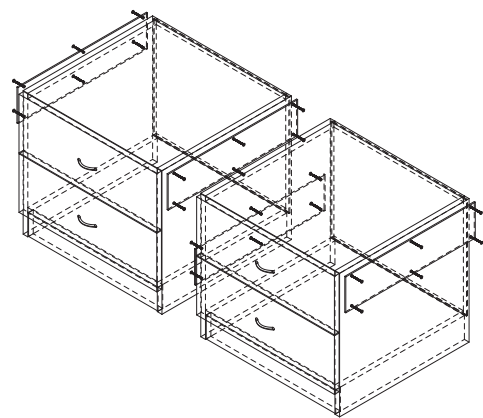
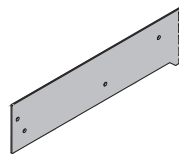
²⁾ complete set for continuous attachment of two shelves



A	ø 9
B	ø 21
C	7.5
D	7
E	31
F	25

Cabinet holder

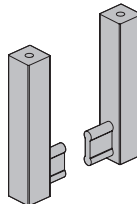
code	colour	length (mm)
359336	grey	450
402857	dark brown	500



Wardrobe rail holder

code	colour
392004	grey
402858	dark brown

- use M5 threaded screw to attach the holder to the shelf



Wardrobe rail

code	colour	length (mm)
392005	grey	900
402859	dark brown	900

