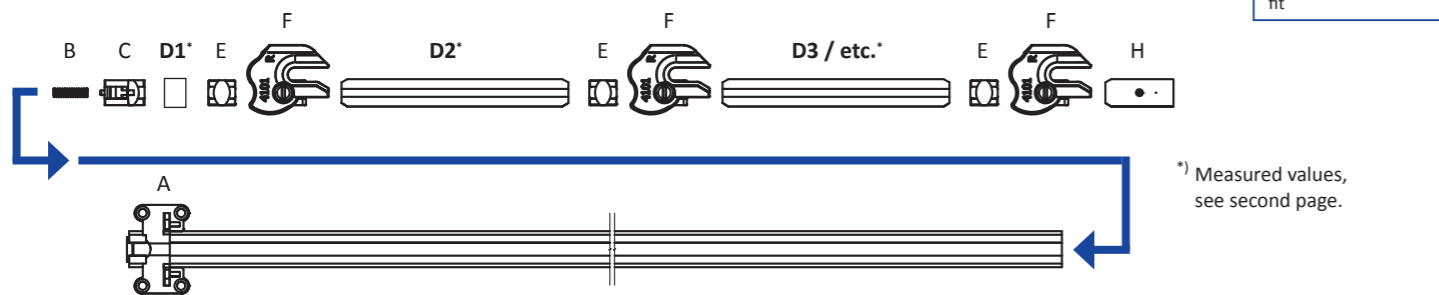


1. FITTING THE SVS3 BAR

1. Shorten the SVS3 bar (A). *)
2. Assemble the components one after the other as shown.
3. Then fit the bar lock (H).



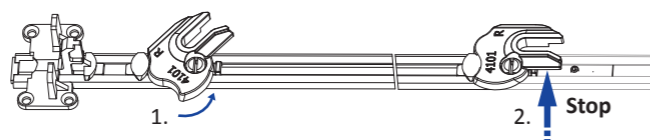
2. FIXING THE COMPONENTS

1. Place the spacer (I) between the counter bar (C) and the SVS3 bar.
2. Push/press all fitted components upwards and hold.
3. Tighten the bar lock (H) with the Allen key (J).
4. Remove the spacer (I).



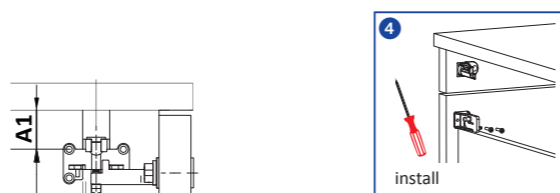
3. FUNCTION CHECK

1. Turn a locking bracket (F) by hand.
2. It must not be possible to turn any of the other locking brackets (F).



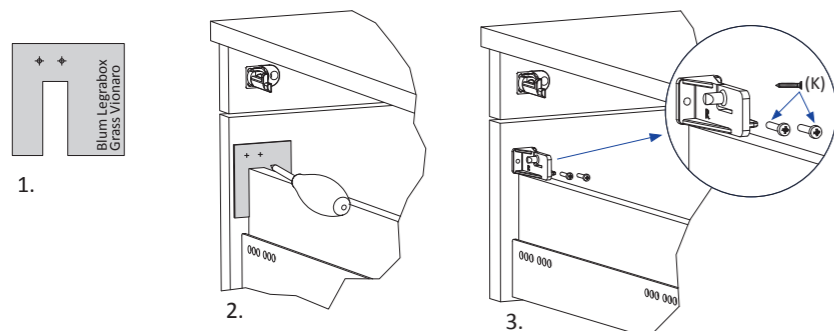
4. INSTALLING THE SVS3 BAR

1. Fasten the installed SVS3 bar in the groove at the screw-on position (A1).
2. Install the guides, drawers and panels.



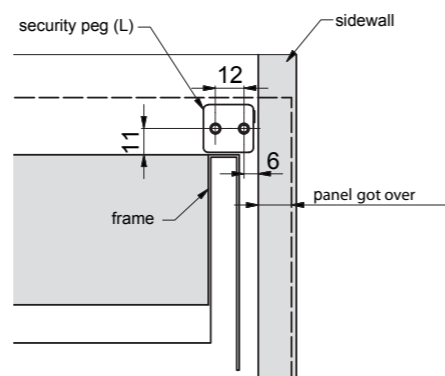
5. INSTALLING THE SECURITY PEG

- Finally, align all panels, then install the security pegs (L).
1. Select the matching template (G) for the frame system.
 2. Mark the screw-on position of the security pegs (L).
 3. Fix the security pegs (L) in place with screws (K).



Without a template
mark the locking pin as shown

Control dimensions



Front view with panel.

6. FUNCTION CHECK

After you have installed all of the drawers, perform a check:

1. Pull out the top drawer with the security peg. All other drawers are locked.
2. Pull out the second drawer. All of the other drawers are locked.
3. Continue in this way until you have checked all drawers.

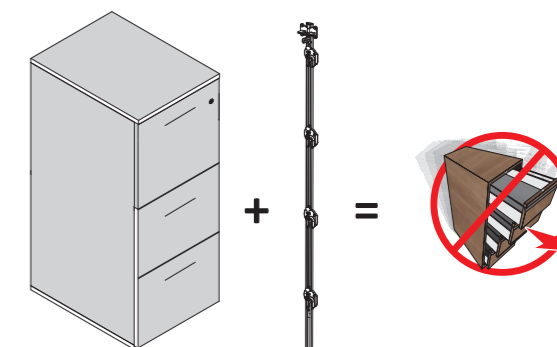
LEHMANN Vertriebsgesellschaft mbH & Co. KG
Postfach 26 20 • D-32383 Minden
Fon +49 571/50 599-0 • Fax +49 571/50 599-822
info@lehmann-locks.com • www.lehmann-locks.com
DIN EN ISO 9001:2008 certified

BDA SVS3 DIY 05-2019 (GB) D63614 v2

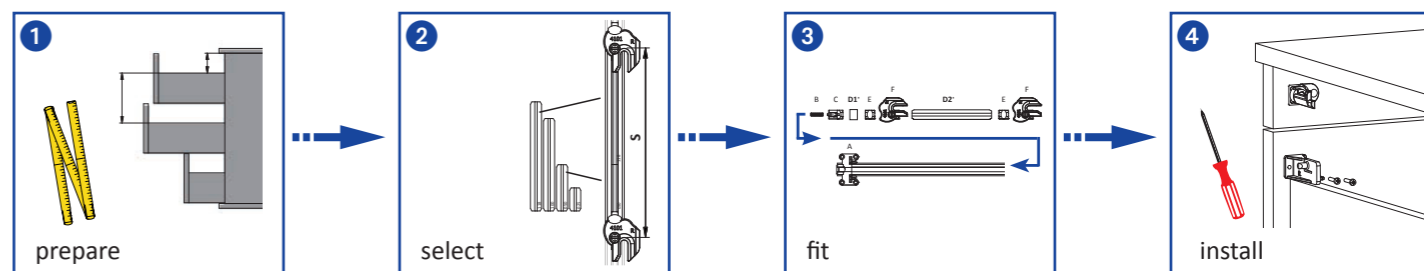
SVS3 DRAWER LOCK / ANTI-TILT

Do-it-yourself installation kit for SVS3 drawer lock

- Prevents simultaneous opening of drawers.
- Uncontrolled opening of several drawers is prevented.
- Risk of unit tilting or falling over is minimized. Injury or damage to property can be prevented.
- Suitable for use in units with or without pen tray. Lock several drawers with one lock. The SVS3 interlock can be used with or without a central lock.
- For system-independent frame systems with 32mm hole lines. Suitable for almost all drawer types.
- Up to 5 drawers and for cabinets up to 1000mm in height.

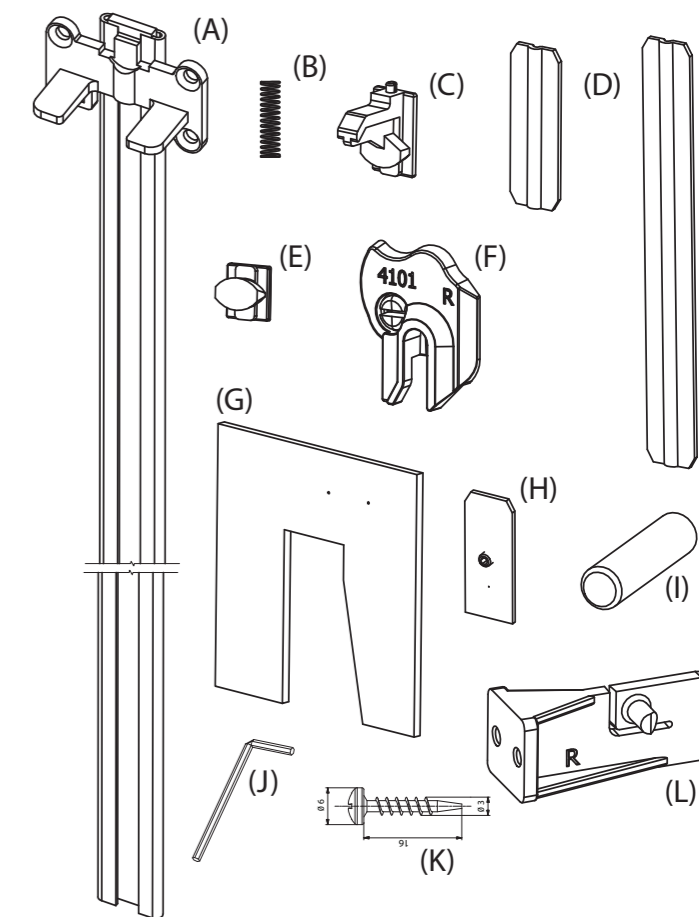


TO DO



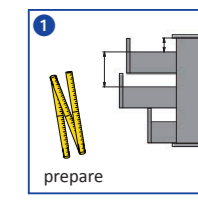
PARTS LIST

(A) SVS3 bar	1 piece	
(B) Spring	1 piece	
(C) Counter bar	1 piece	
(D) Short inserts	6 pieces	
	Inserts for 32mm size units	18 pieces
(E) Counter bracket	5 pieces	
(F) Locking bracket right	5 pieces	
(G) Template for frame systems:	2 pieces	
	Blum Legrabox,	
	Hettich ArchiTech	
(H) Bar lock, for screw locking	1 piece	
(I) Spacer	1 piece	
(J) Allen key	1 piece	
(K) Flat head screw 3x16	10 pieces	
(L) Security peg	5 pieces	



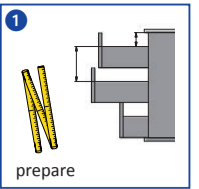
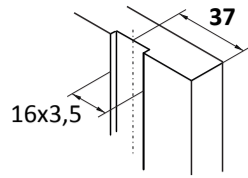
Lock for 37mm groove (available separately).

VCS18.2 Lock 952.03	Prestige Lock 429.09	Ø VCS18.2 18mm - 19mm Ø Prestige 16,5mm - 19mm
------------------------	-------------------------	---

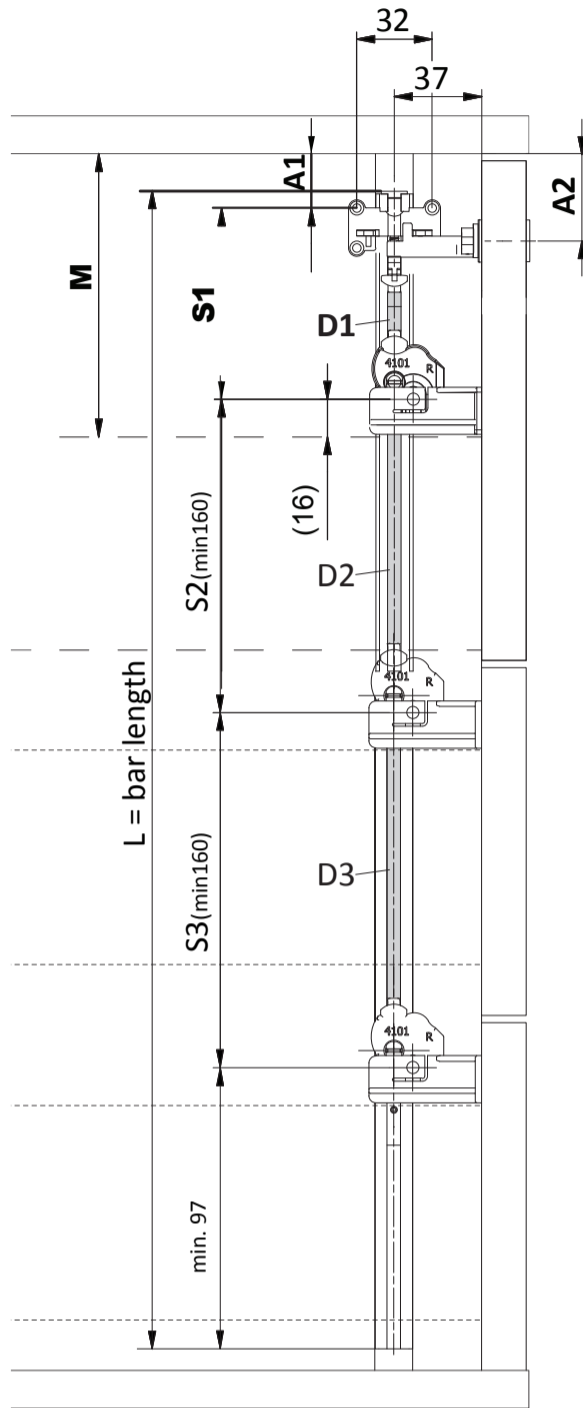


PREPARE

- The right-hand side of the body must be grooved.
The dimension 37mm applies for external panels.



- Determine dimension (M) minimum 92mm. The distance between the top edge of the first draw side and the underside of the top panel.
The dimension (M) is the basis for the configuration of the SVS3 bar.
- Determine the lock position **A2** (at least 21mm). This results in **A1** (at least 7mm), the screw-on position of the SVS3 bar to the underside of the cover.
If the dimension (A2) changes, the dimension (A1) changes accordingly. For installation without a lock, use (A1) for further calculations.
- A variable distance between the lock and the frame is created with the (D1) inserts.
Determine (D1).
Several inserts can be combined to cover any dimension (M) from the minimum dimension of 92mm.
- Enter the distances between the frames S2 - S6 (at least 160mm). This allows you to determine the inserts to be used (D2 - D5).
- Calculate (S1), the distance between the screw-on position of the SVS3 bar and the centre of the security peg.
- Calculate the bar length (L) and shorten the SVS3 bar (A).



M (min. 92mm)

M = _____

A2 (min. 21mm)

A2 = _____

A1 (min. 7mm)
A1 = A2 - 14mm

A1 = _____

D1 = M - A1 - 81mm
or
D1 = M - A2 - 64mm

D1 = _____

S2 = _____ - 32mm =
S3 = _____ - 32mm =
S4 = _____ - 32mm =
S5 = _____ - 32mm =

D2 = _____
D3 = _____
D4 = _____
D5 = _____

S1 = 72mm + D1

S1 = _____

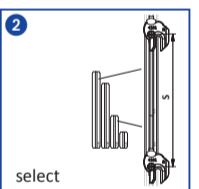
L = S1 + S2 + ...Sn + min. 104mm
or
L ~ internal height - A1

L = _____

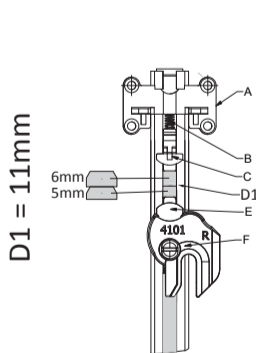
- To fit the calculated inserts, continue on the next page. →

ALLOCATION OF INSERTS

Drawer spaces greater than 160mm are extended/assembled with 32mm size units.
No inserts need to be shortened.



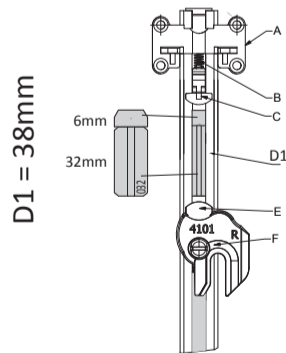
D1 Example



D1 = 11mm

- 1 St. 9mm
- 1 St. 8mm
- 1 St. 7mm
- 1 St. 6mm
- 1 St. 5mm
- 1 St. 4mm

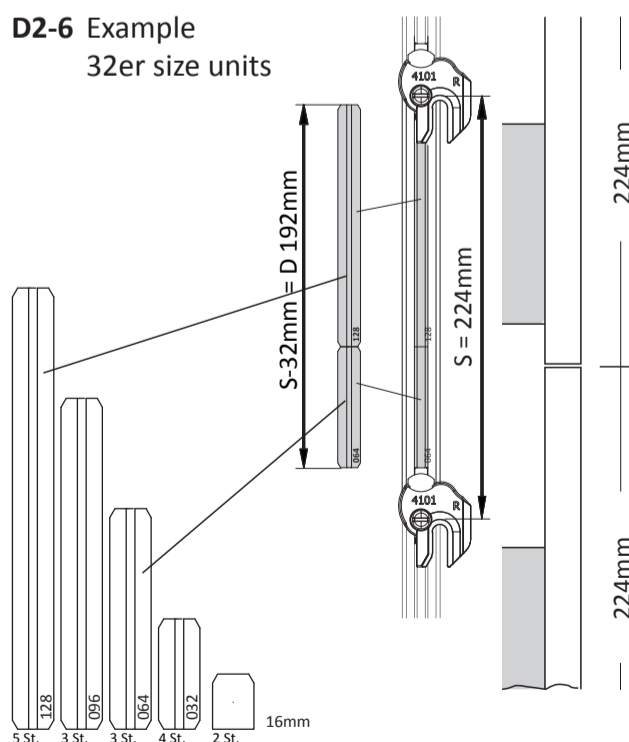
Short inserts



D1 = 38mm

The 32mm size inserts are available for larger spaces.

D2-6 Example 32er size units



32 size unit inserts

