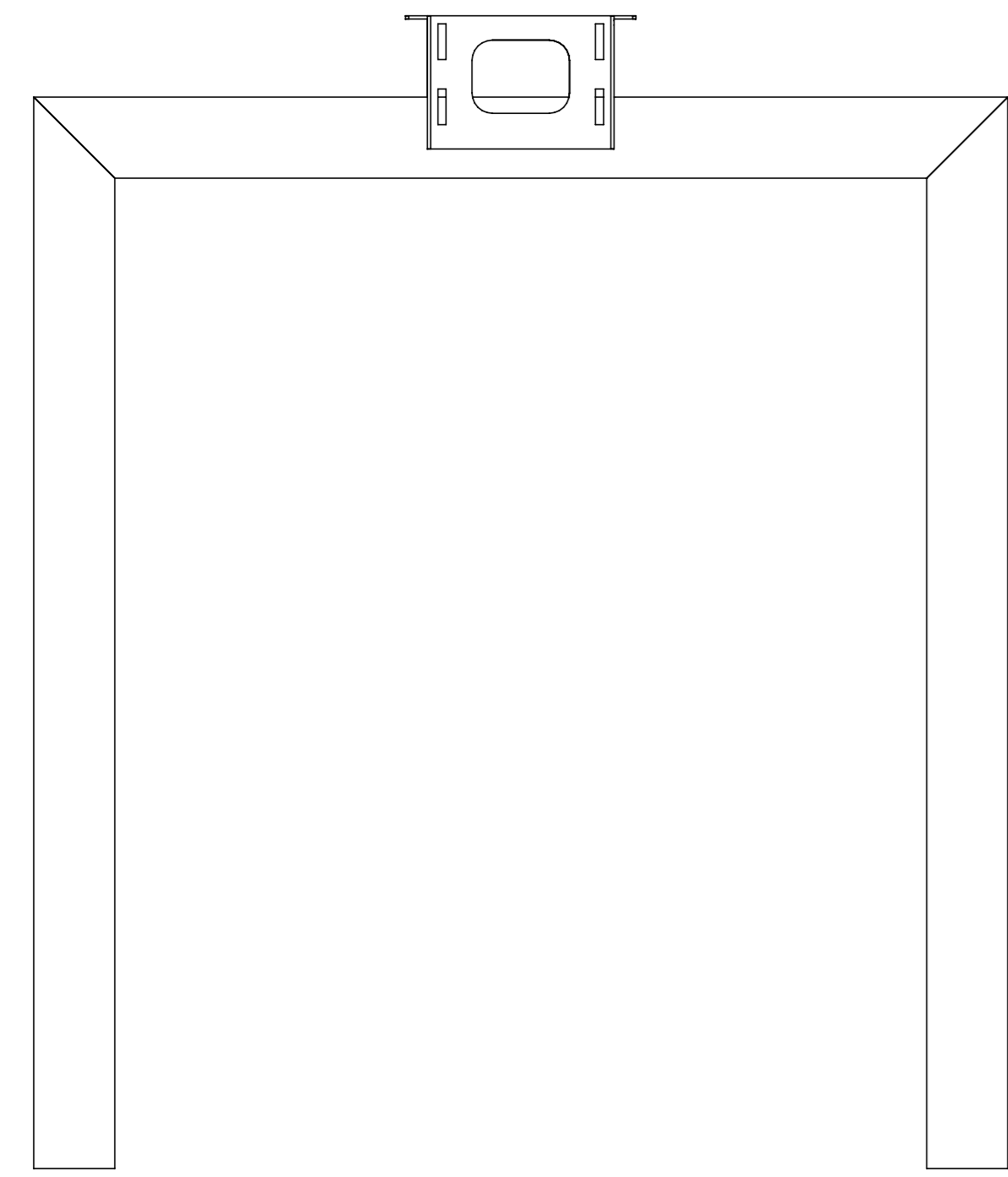
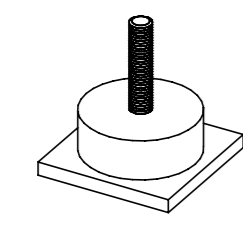


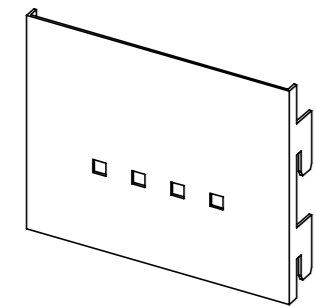
A stelaż biurka x 2 szt | steel legs x 2 pcs



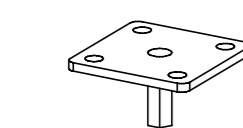
B regulator x 4 szt | adjustable feet x 4 pcs



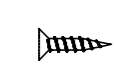
C osłona głowicy x 2 szt | top cover x 2 pcs



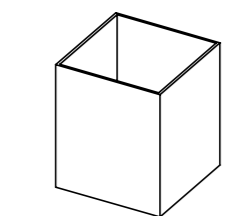
D płytka montażowa x 4 szt
| mounting plate x 4 pcs



E wkręt x 16 szt | sharp screw x 16 pcs



F dystans x 4 szt | support x 4 pcs



G śruba x 4 szt | screw x 4 pcs



H klucz imbusowy x 1 szt | allen key x 1 pc



I wkręt x 4 szt | sharp screw x 4 pcs



potrzebne narzędzia | necessary tools



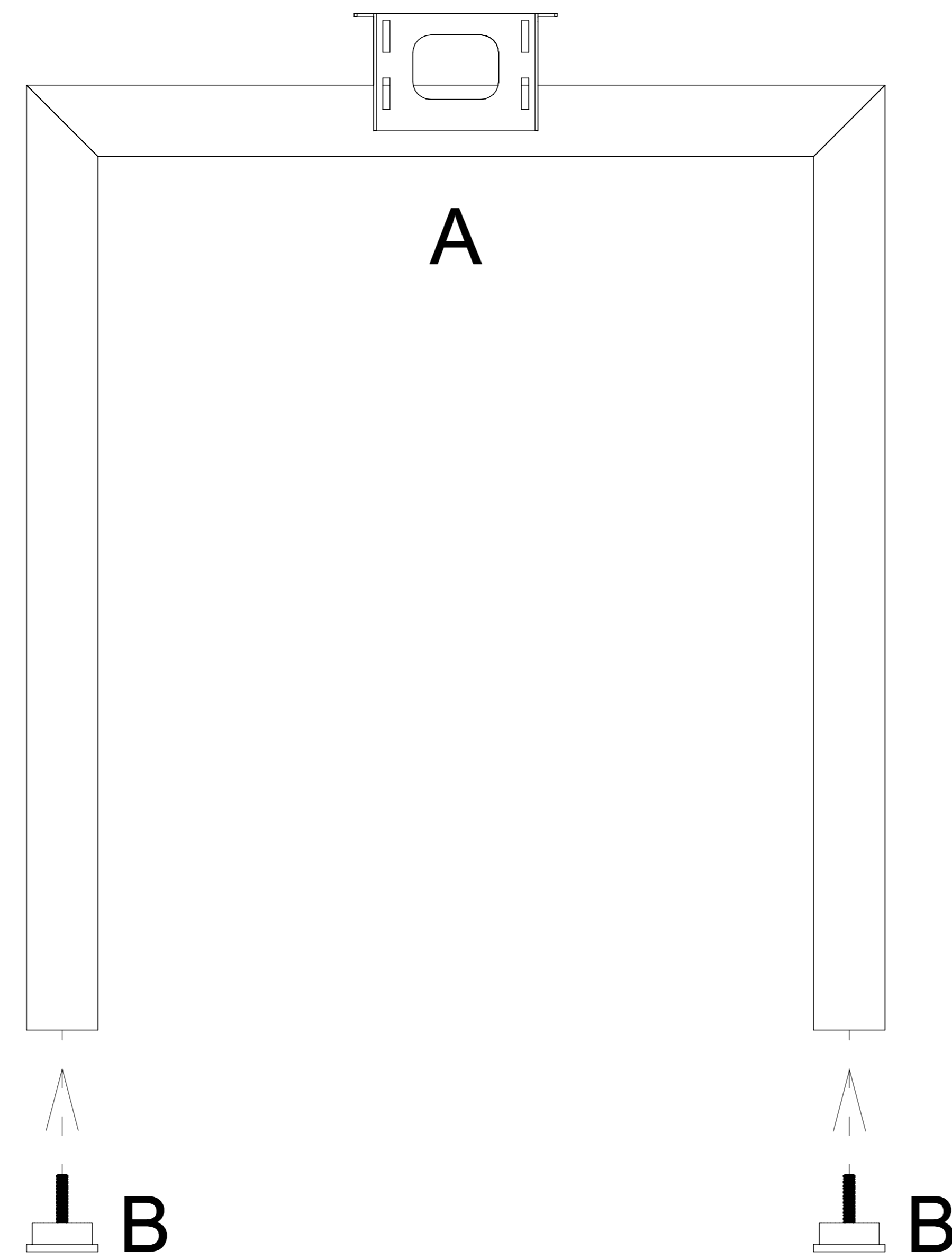
INSTRUKCJA MONTAŻU | ASSEMBLY INSTRUCTION

Q 7106, Q 7107, Q 7108

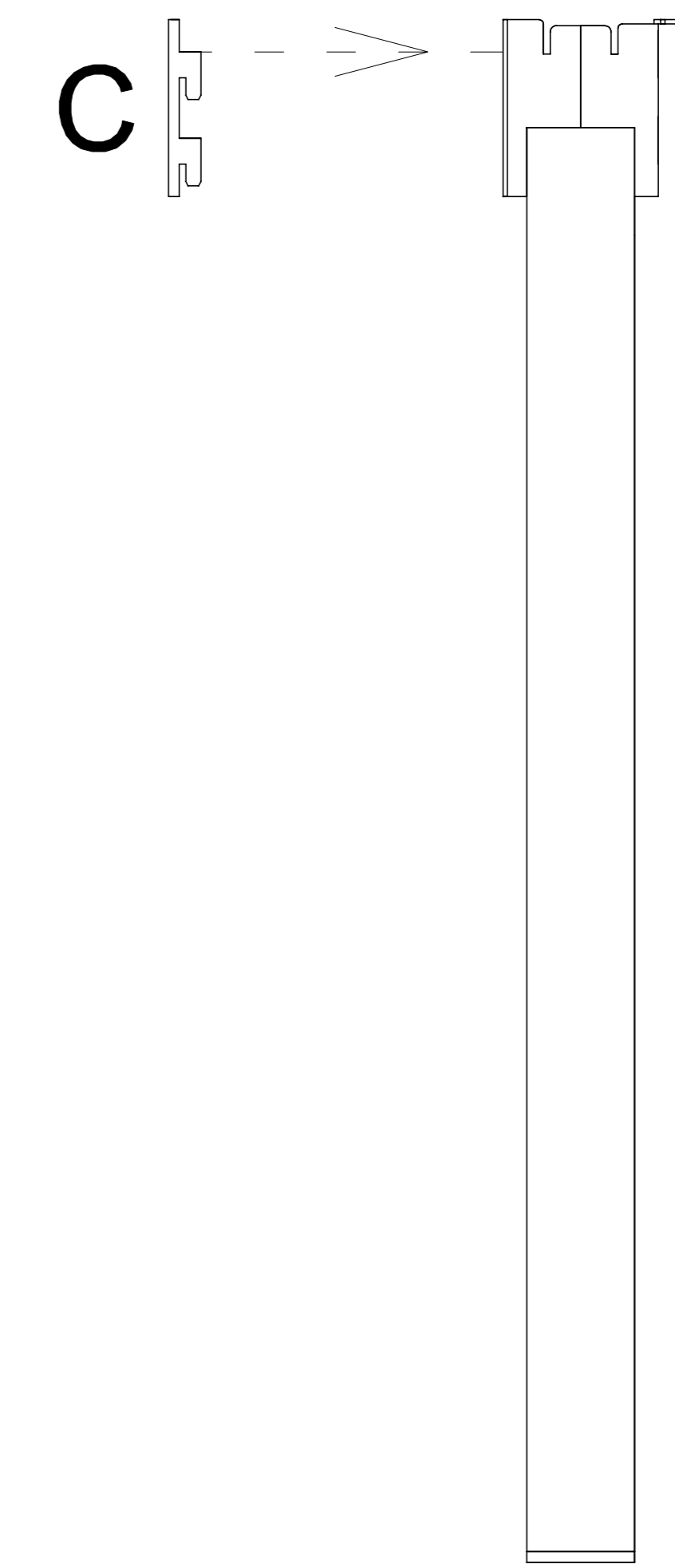


2019.06

1



2



3



4

