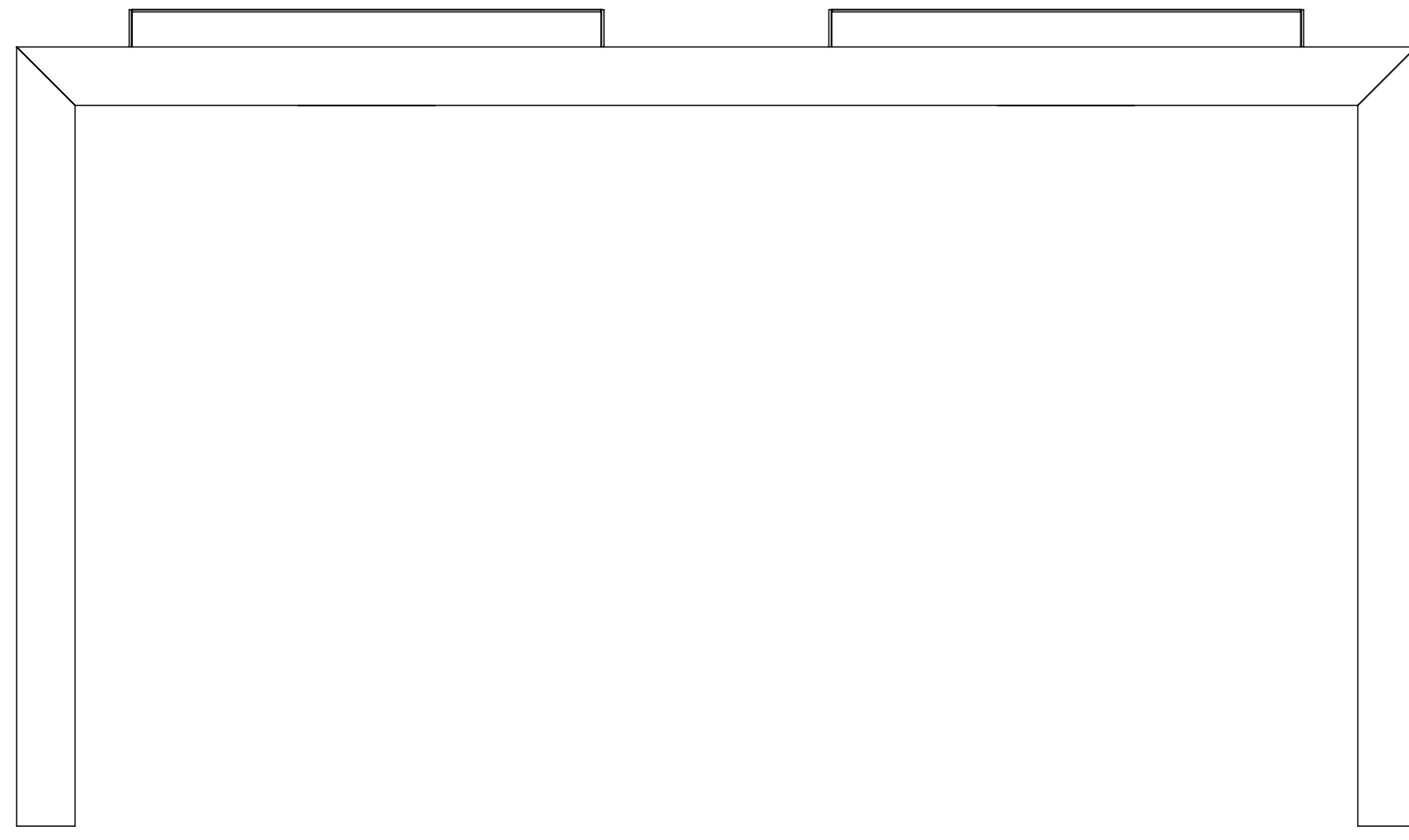
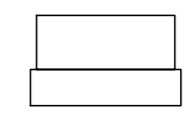


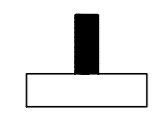
A stelaż biurka podwójny x 2 szt | double steel legs x 2 pcs



B wkładka x 4 szt | insert x 4 pcs



C regulator x 4 szt | adjustable feet x 4 pcs



D wkręt x 32 szt | sharp screw x 32 pcs



potrzebne narzędzia | necessary tools



INSTRUKCJA MONTAŻU | ASSEMBLY INSTRUCTION

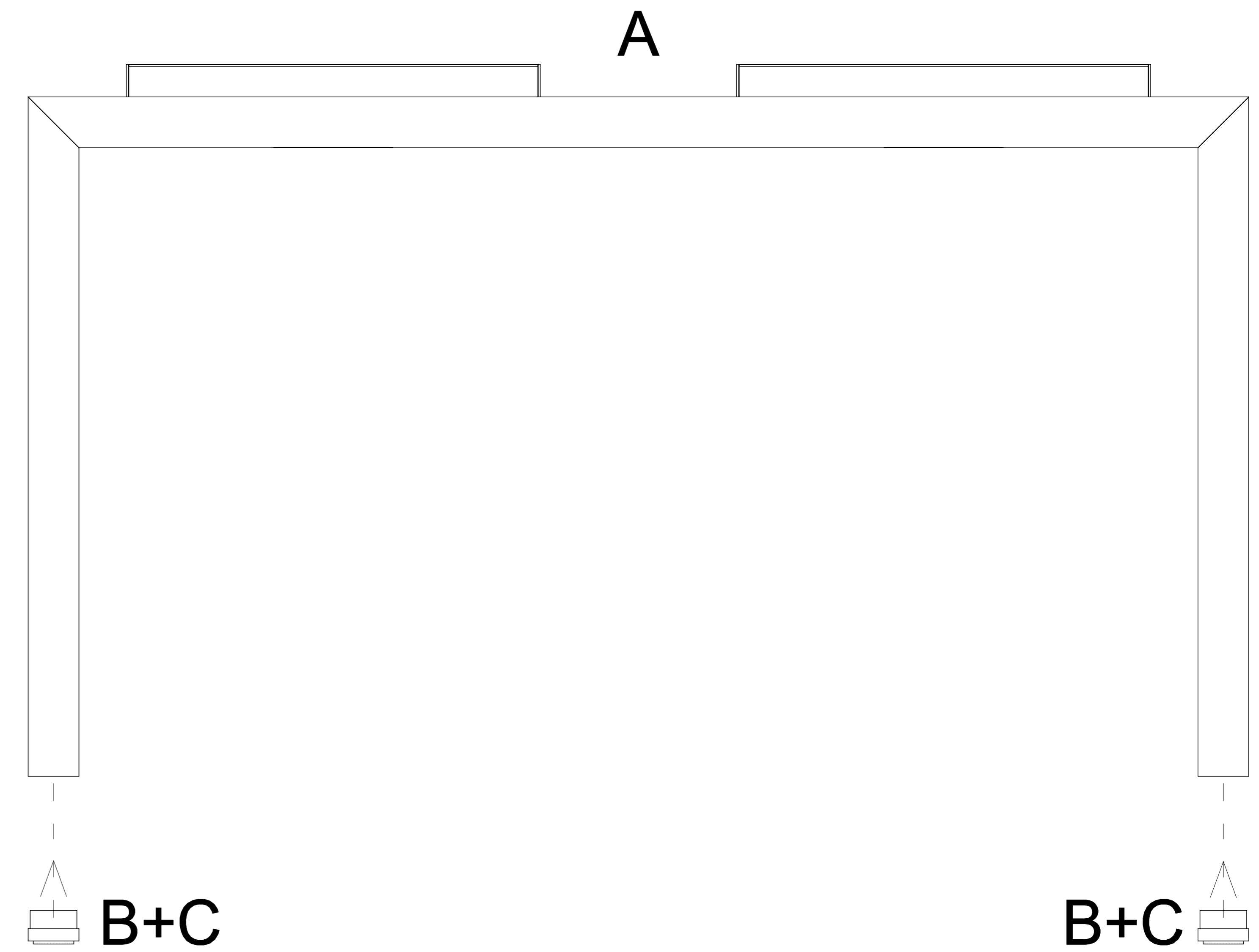
Q 7512, Q 7514, Q 7516



2019.06

1

2



3

