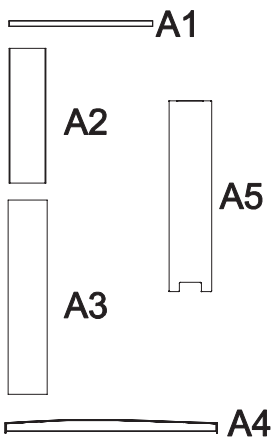


A stelaż biurka regulowany x 2 szt | steel legs height adjustable x 2 pcs



B śruba x 8 szt | screw x 8 pcs



C klucz imbusowy x 1 szt | allen key x 1 pc



D zaślepka x 4 szt | end plug x 4 pcs



E regulator x 4 szt | adjustable feet x 4 pcs



F śruba x 8 szt | screw x 8 pcs



G klucz imbusowy x 1 szt | allen key x 1 pc



H wkręt x 4 szt | sharp screw x 4 pcs



potrzebne narzędzia | necessary tools



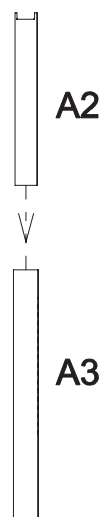
INSTRUKCJA MONTAŻU | ASSEMBLY INSTRUCTION

ST 227/60 R

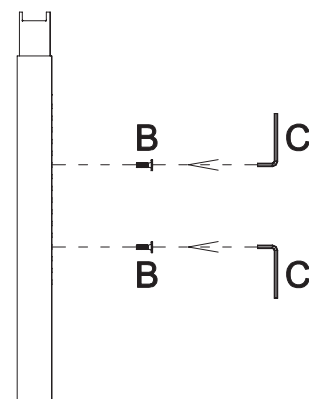


2019.08

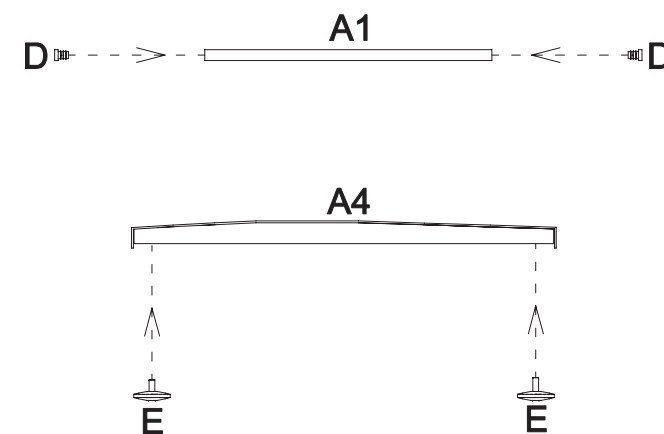
1



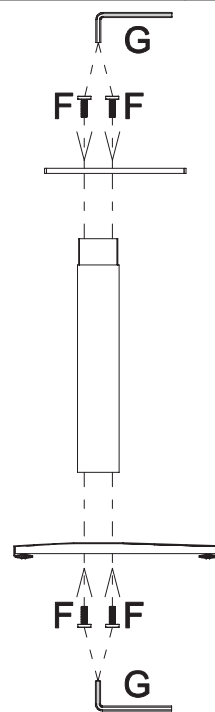
2



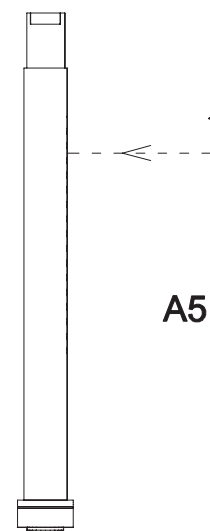
3



4



5



6

